



TIIG

INJURY SURVEILLANCE IN THE NORTH WEST OF ENGLAND

University Hospital Aintree Emergency Department Monthly Bulletin: January to December 2013

This bulletin provides a breakdown of all attendances¹ at University Hospital Aintree Emergency Department (ED) between January and December 2013.

From January to December 2013, there were 82,247 attendances to University Hospital Aintree ED. January had the highest number of attendances (n=7,443) and November (6,632) had the lowest.

There were equal numbers of male (50%) and female (50%) attendances to Aintree ED (**Figure 1**). **Figure 2** illustrates age group of ED attendances for each month. Over two-fifths (42%) were aged 30-59 years and almost all (99%) ED attendances were aged 15 years or above, which is most likely due to the close proximity of the local children's ED (Alder Hey).

Of those injury groups recorded road traffic collisions accounted for 2% of all attendances, 2% assaults and 2% sports injuries (**Table 1**).

Table 2 shows the location of the incident of attendances. Almost three quarters (74%) of incidents took place in the home, 10% in a public space and 4% in work.

Table 3 shows the arrival method of attendances at University Hospital Aintree ED. Close to four in ten (38%) arrived by an ambulance.

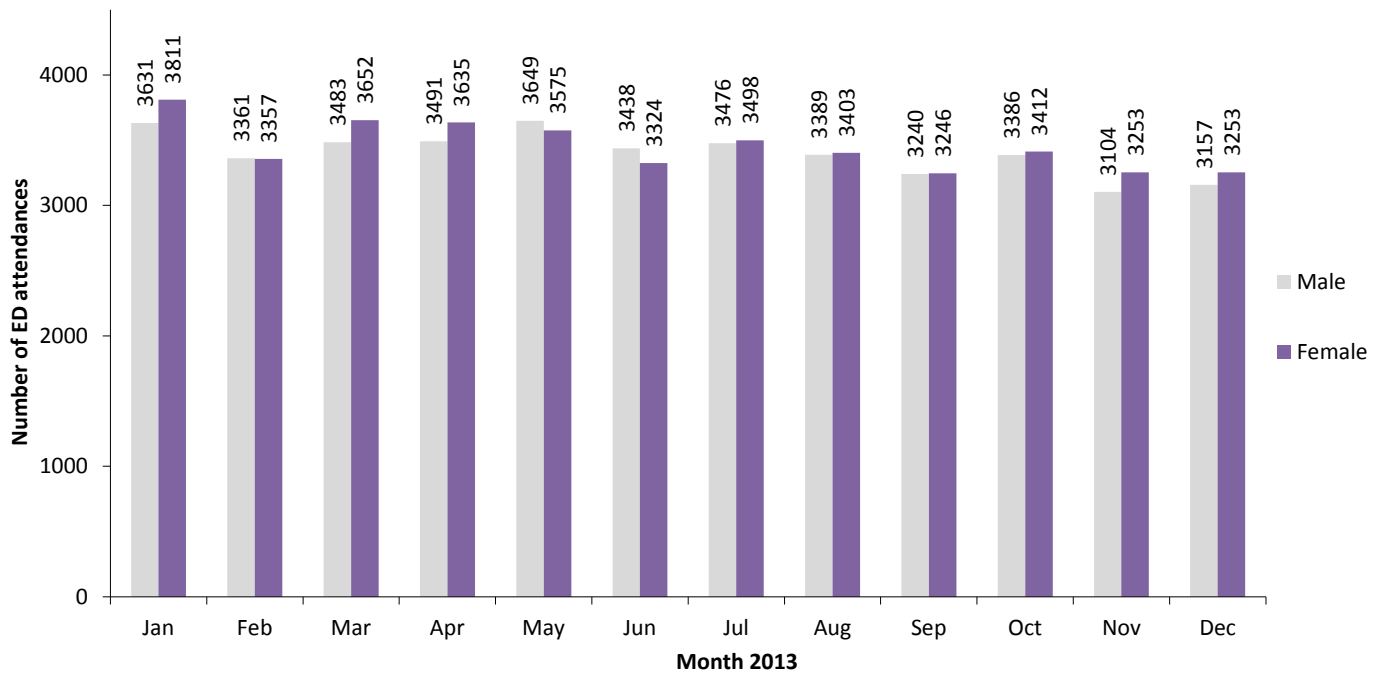
The disposal of a patient can give an indication of the severity of injuries sustained. Over four in ten (43%) of ED attendees were discharged whilst a third (33%) were admitted into hospital (**Table 4**).

Assaults

During January to December 2013 there were 1,823 assault attendances to University Hospital Aintree ED. Almost three-quarters (74%) of assault attendees between January and December 2013 were male. Almost half (49%) were aged between 15 and 29 years of age and 48% were aged between 30 and 59 years.

¹For other EDs, TIIG reports on injuries only. However, this report includes all attendances at Aintree ED. This is due to the high number of 'unknown' injury groups amongst attendances at Aintree ED which makes it difficult to analyse injury attendances separately.

Figure 1: Gender of ED attendances by month, January to December 2013*



*There were 23 attendances where gender was recorded as unknown

Figure 2: Age group of ED attendances by month, January to December 2013

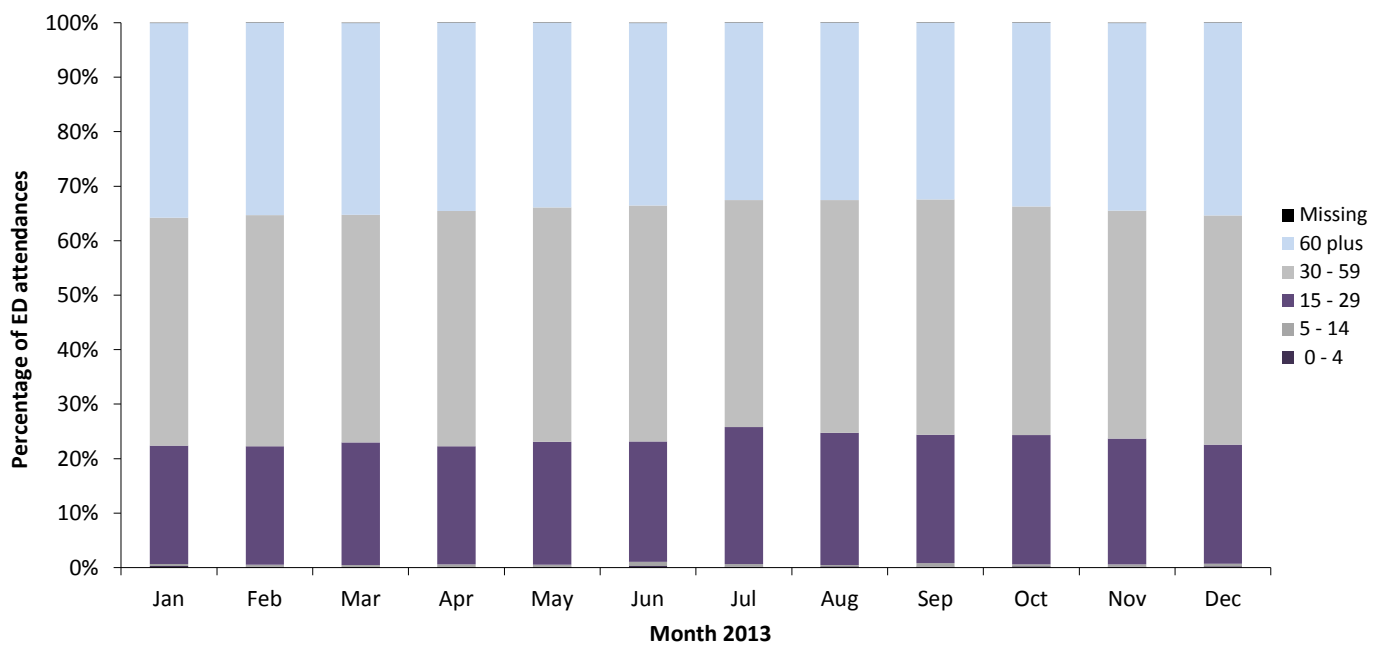


Table 1: ED attendances by injury group and month, January to December 2013²

Injury group	Jan	Feb	Mar	Apr	May	Jun	Jul	Aug	Sep	Oct	Nov	Dec	Total	%
Other/unknown	6951	6194	6602	6579	6652	6221	6385	6229	5939	6285	5844	5917	75798	92
Road traffic accident	142	131	161	167	152	171	166	128	165	146	150	153	1832	2
Assault	165	149	136	143	157	153	174	178	136	149	155	128	1823	2
Sports injury	87	133	125	143	158	115	122	130	149	123	92	105	1482	2
Deliberate self-harm	80	99	104	80	97	94	117	122	<100	<100	107	89	1179	1
Firework	18	12	11	14	9	11	11	7	***	<10	14	18	133	0
Total	7443	6718	7139	7126	7225	6765	6975	6794	6489	6801	6362	6410	82247	100

² Please note that all numbers less than five have been suppressed in line with patient confidentiality and if there is only one number less than five in a category then two numbers will be suppressed at the next level in order to prevent back calculations from totals.

Table 2: ED attendances by location of incident and month, January to December 2013

Incident location	Jan	Feb	Mar	Apr	May	Jun	Jul	Aug	Sep	Oct	Nov	Dec	Total	%
Home	5621	5077	5370	5262	5170	4843	5035	4915	4706	4999	4678	4827	60503	74
Other	862	720	701	806	962	944	833	840	721	810	751	680	9630	12
Public place	668	629	755	763	774	678	775	752	736	669	585	637	8421	10
Work	283	270	289	276	298	287	323	287	310	299	332	246	3500	4
Educational establishment	9	22	24	19	21	13	9	0	16	24	16	20	193	0
Total	7443	6718	7139	7126	7225	6765	6975	6794	6489	6801	6362	6410	82247	100

Table 3: ED attendances by arrival mode of incident and month, January to December 2013

Arrival Mode	Jan	Feb	Mar	Apr	May	Jun	Jul	Aug	Sep	Oct	Nov	Dec	Total	%
Other	4525	4191	4411	4437	4563	4188	4485	4284	4127	4159	3828	3777	50975	62
Ambulance	2918	2527	2728	2689	2662	2577	2490	2510	2362	2642	2534	2633	31272	38
Total	7443	6718	7139	7126	7225	6765	6975	6794	6489	6801	6362	6410	82247	100

Table 4: Discharge method of ED attendances by month, January to December 2013

Discharge method	Jan	Feb	Mar	Apr	May	Jun	Jul	Aug	Sep	Oct	Nov	Dec	Total	%
Discharged	3023	2742	3067	3019	2941	2973	3124	2917	2823	2974	2812	2835	35250	43
Admitted to Hospital	2621	2280	2409	2358	2352	2260	2106	2109	2015	2170	2041	2146	26867	33
Discharged to General Practitioner	704	686	657	657	751	552	578	603	626	564	533	527	7438	9
Left Department	326	296	269	383	345	224	329	322	256	313	247	197	3507	4
Referred Fracture Clinic	262	244	228	244	289	297	300	334	314	296	287	295	3390	4
Referred to other outpatient clinic	183	164	182	170	180	176	166	185	164	203	176	158	2107	3
Referred ED Clinic	106	118	118	100	142	100	152	126	111	77	89	92	1331	2
Other Health care provider	89	66	90	91	103	94	106	94	95	89	88	76	1081	1
Other	96	91	89	88	100	70	98	84	69	90	72	64	1011	1
Died in department	33	31	30	16	22	19	16	20	16	25	17	20	265	0
Total	7443	6718	7139	7126	7225	6765	6975	6794	6489	6801	6362	6410	82247	100

Published May 2014

Jennifer Brizell – TIIG Researcher/Analyst

Centre for Public Health, Faculty of Education, Health and Community, Liverpool John Moores University,
2nd Floor, Henry Cotton Building, Liverpool L3 2ETT: 0151 231 4500 | E: j.s.brizell@ljmu.ac.uk | W: www.tiig.info and www.cph.org.uk | Twitter: [www.twitter.com/tiig_cph](https://twitter.com/tiig_cph)